

Massifs Development Plans in MIDI-PYRENEES

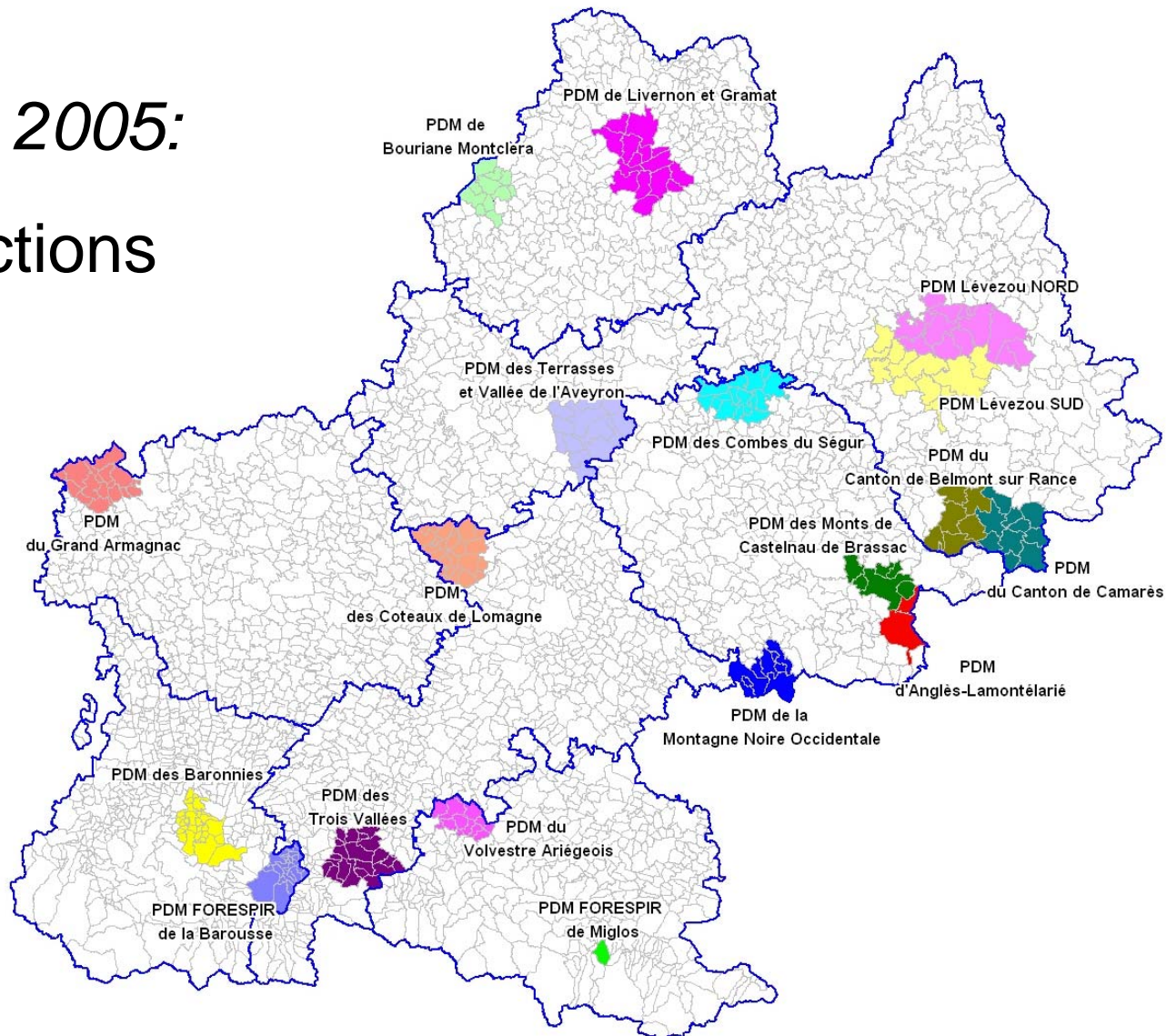
Thomas PETREAULT

PDM objective in Midi-Pyrénées :

Activate the private forest management in the heart of the territories

Since 2005:

19 actions



Innovations

→ A technical partnership CRPF – local Coopérative

Privileged: because cooperatives have the right to submit grouped applications to get State grants.

Non-exclusive: because economic actors of the territory are informed of the approach.

→ A political partnership CRPF – Local officials

For information dissemination: officials are information go-between.

For the implementation of grouped project: officials make easier the grouping of forest owners for roads creation, ...

→ A 3 phases progress

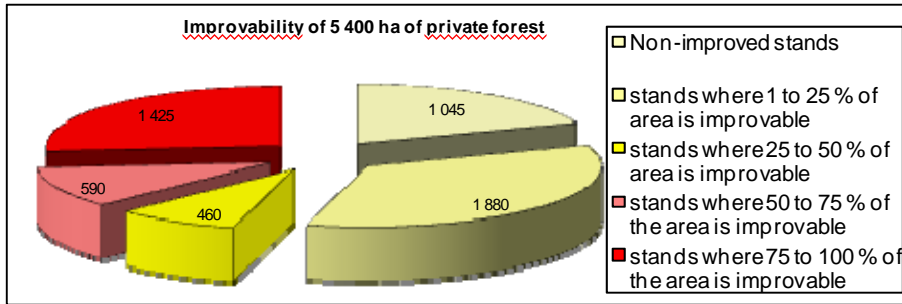
1-Massif current situation (inventory, SIG cartography)

2-Owners coordination (meetings, trainings, guidance, grouped projects)

3-Implementation and follow-up of operations

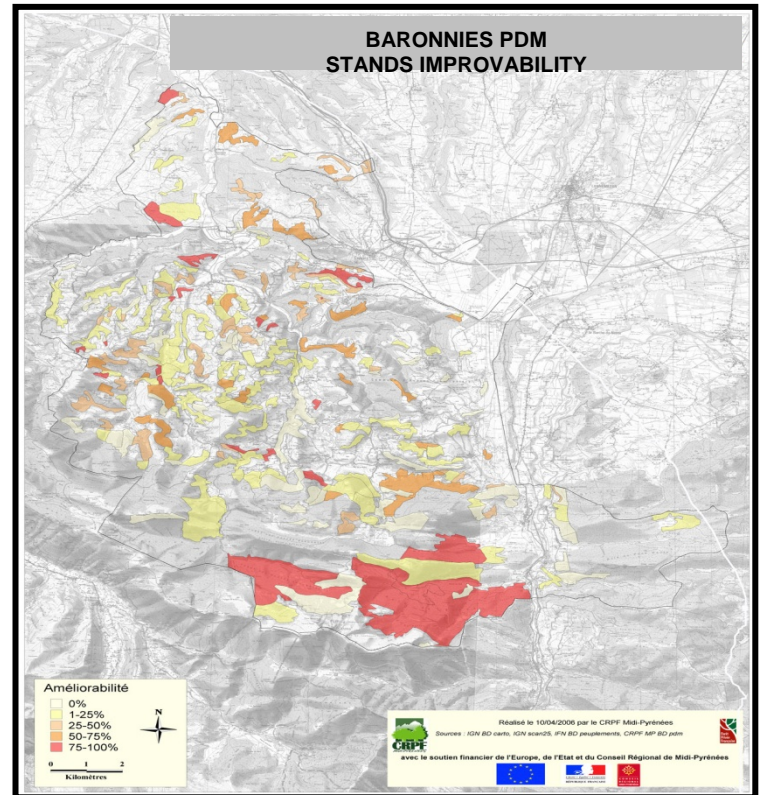
Main results and key elements

- Integration of 19 PDM in **territorial approaches** (Pays, Natural Regional Park, Forest Territorial Charter...).
- 230** communes made aware in the course of **125 events**.
- 130,000 ha** of forest characterized which represent **15% of regional private forest**.



Listed informations:

- *species,*
- *stands improvability,*
- *stands harvestability,*
- *stands health state,*
- *stands accessibility,*
- *environmental interest and biodiversity.*



-18 000 owners contacted.

-1 400 owners met: $\frac{3}{4}$ were unknown to forest partners.



-More than 1000 diagnostics implemented:

With computer recording and cartography.

A screenshot of a computer form with two columns. The left column is titled 'Description des parcelles' and contains various fields for recording forest data. The right column is titled 'Description des arbres' and contains fields for recording tree data. The form is filled with text and numbers.

Forests > 25 ha

- + 5 % of forest equipped with a **Management Plan (PSG)**

- 100 % of forests under the special statutes for cutting authorization are equipped with a PSG.

Forests < 25 ha

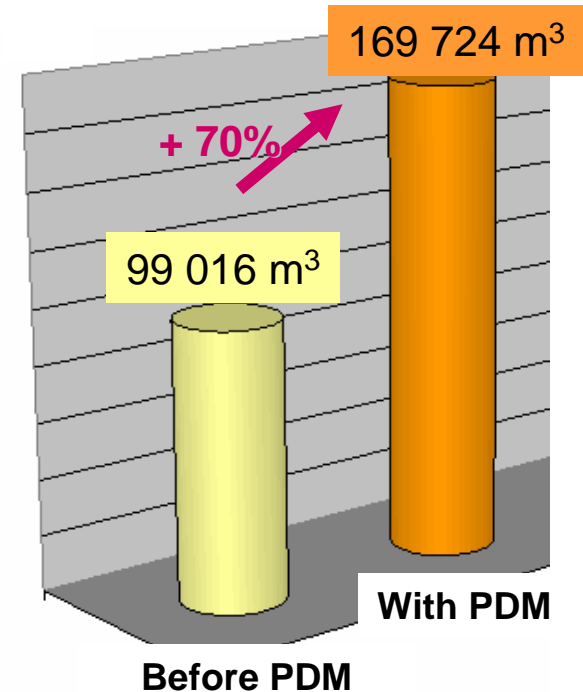
- 250 forests are equipped with a **Good Silviculture Practices Code.**

-Management of **grouped projects**:
road network creation by owners, ...



-Contribution to the **70%** rise
of harvested volumes.

In 13 PDM
Total harvested volumes
on **24 months.**
(source: cooperatives)



CONCLUSION and PROSPECTS

- Very encouraging PDM results
- Reflections on methodology and partnerships improvement.
- Reflections on the implementation of complementary tools (assistance for grouping)