

THE MASSIF DEVELOPMENT PLAN

(PDM)

**In private forest ownership in
Rhône-Alpes**

9th March 2010

**Centre Régional
de la Propriété Forestière
Rhône-Alpes**



PRIVATE FOREST IN RHONE-ALPES

1.142.000 ha (of which 1.032.000 ha of productive forests)

75 % of forest cover

25 % of Rhône-Alpes' surface area

Very fragmented : 1/3 of private forest cover is on < 4 ha ownerships

55 % is on > 30 % slopes

Harvest rate = 53 % (harvest / increment in m³)



Net increment = 6 millions m^3

Wood fuel reserve = 2,1 millions m^3 on difficult accessible sites

Area with a management plan : 6 %

8 « départements » professional unions
40 silviculturist groups (8,000 members)
2 “selling” and “tending” cooperatives
(35 % of private forest volume)



THE CRPF

Structure : 1 council of elected owners representing all > 4 ha owners.

40 employee of whom 25 are on field technicians

<u>2005 budget</u> :	French State	1.163.000 €
	Chambers of Agriculture	624.000 €
	Local governments	1.029.302 €

Missions : Group for action (timber production, biomass, cares)

Train private owners to good silviculture skills

Guide silviculture, approve management plans (PSG and CBPS)

THE MASSIF PLAN

Table of contents

Facts

Overview

Content

Main results

Conclusion

Facts

- Any territory has a proper vocation.
- The fragmentation of private forest ownership, in particular in Rhône-Alpes, requires adopting a level of thinking and action at a human scale allowing to unite actions of private forest owners.
- Forest development would gain in coherence if all concerned partners work together (local and « département » elected representatives, State forest authorities DDAF, cooperatives, interprofessional bodies, forest users).
- This is not possible to work on the whole territory in a simultaneous way.

Overview

- 1,000 to 6,000 ha massifs (avg : 3,000 ha)
- Plan what could be done in the 10 coming years as if the massif was grouped in one ownership.
- Negotiate objectives with private forest and our partners (elected officials, owners representatives, users, approved management operators)
- Coordinate a « bust » operation during 2 years.
- Follow what we carry out compare to the objective.

ORGANIZATION

- The massif plan is for 15 % a study, and for 85 % a CRPF development tool in connection with local actors.
- CRPF coordination time: 150 days/PDM on 2 years, or 1/3 of a technician activity.
- PDM 2 years cost: 60,000 €
- In Rhône-Alpes, PDM are financed by:
 - the Region (50 %)
 - FEADER (20 %)

CONTENT (a 4 phases progress)

PHASE 1 : sphere of operation, stakes and operators

Establishment criterias :

- silvicultural homogeneity
- strong local political request
(local development program)
- existing or planned « forest charter »

The main stakes are stated

The CRPF, with help of local silviculturist group, choose approved operators

A technical comity is created with officials, operators, silviculturist groups and administrations.

PHASE 2 : diagnostic

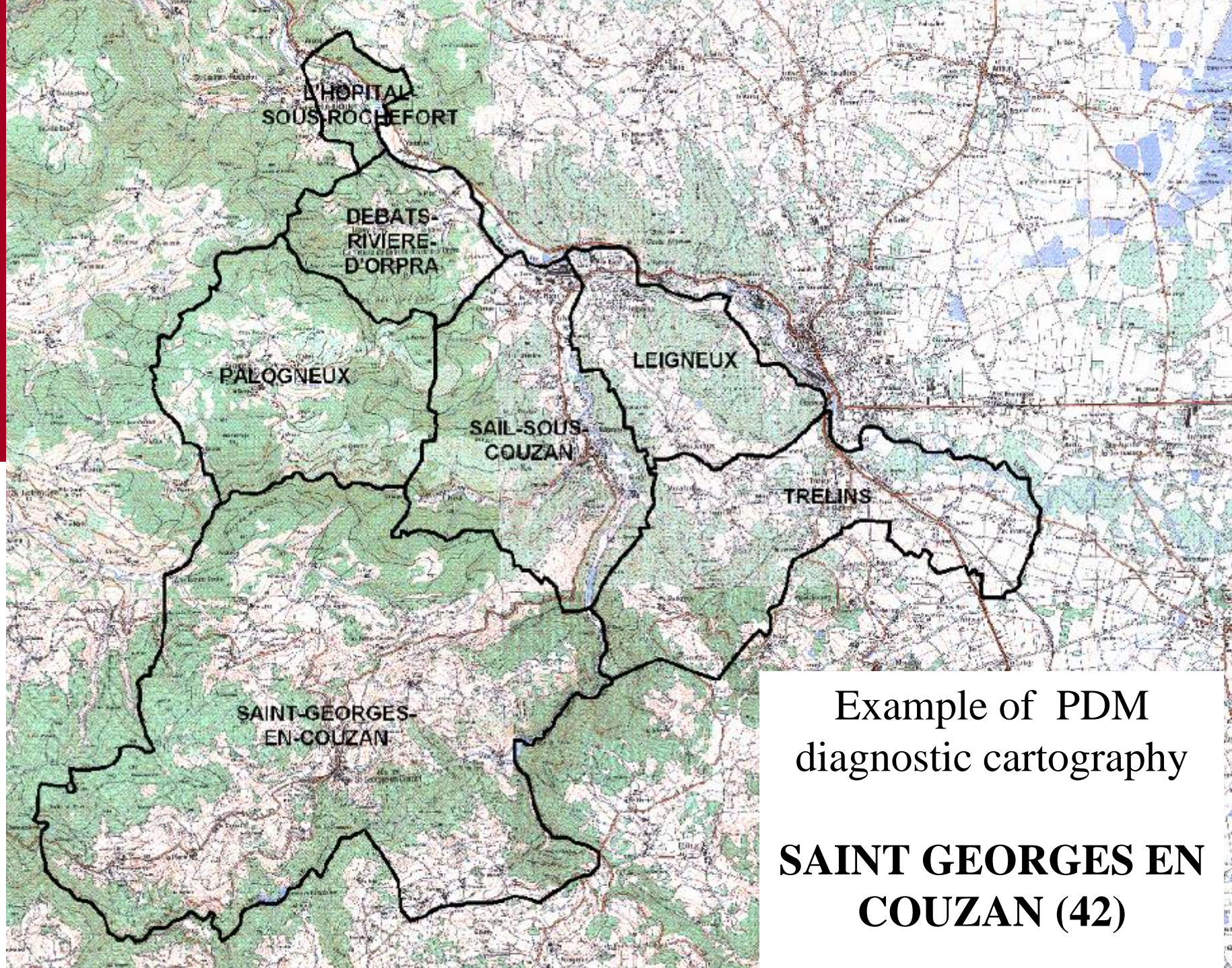
10 to 20 days study including:

- a general presentation
- an environmental study
- strengths and weakness of the massif
- action-sheets projects

In the following topics:

- ownership structure
- infrastructure
- sustainable management and certification documents
- harvesting and forest improvement(with a detailed silvicultural analysis)
- biodiversity and environment protection
- recreation

The diagnostic is discussed and validated by the present actors.



Example of PDM
diagnostic cartography

**SAINT GEORGES EN
COUZAN (42)**

TYPES DE FORMATIONS VEGETALES (IFN - année de référence 1990)

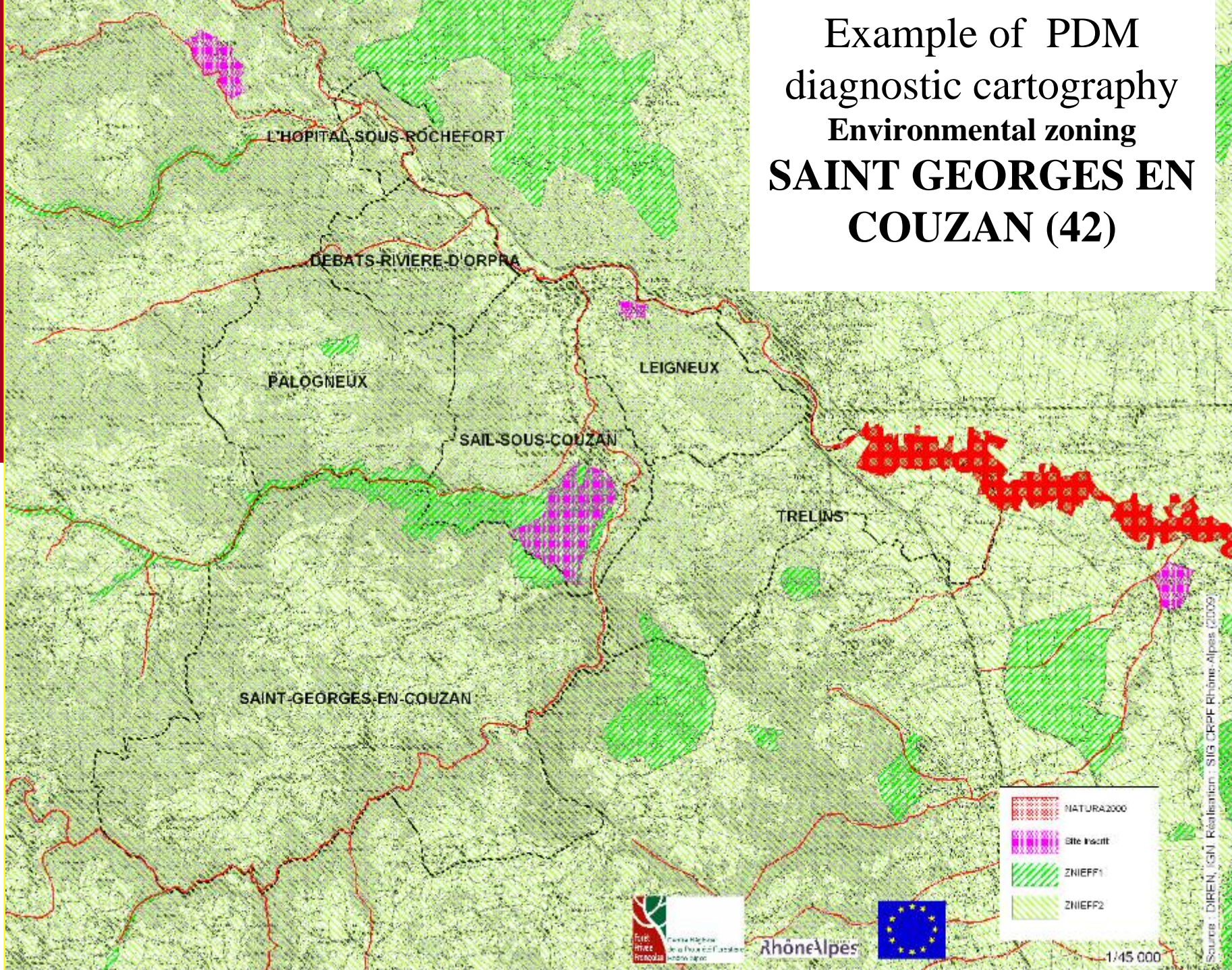
- AUTRE BOISEMENT MORCELE
- BOISEMENT MARGINAL
- BOISEMENT MORCELE DE PIN SYLVESTRE (CHAMP BOISE EN PINS)
- FUTAIE DE CONIFERES (PIN SYLVESTRE MAJORITAIRE)
- FUTAIE DE CONIFERES (SAPIN MAJORITAIRE)
- FUTAIE MIXTE DE PIN SYLVESTRE ET FEUILLUS
- MELANGE DE FUTAIE DE CHENES ET TAILLIS DE PLAINE
- MELANGE DE FUTAIE DE FEUILLUS ET TAILLIS DE MONTAGNE
- REBOISEMENT DE CONIFERES

DEBATS RIVIERE D'ORPHE
L'HOPITAL SOUS ROCHEFORT
LEIGNELX
PAILLOUX
SAINT GEORGES EN COUZAN
SAIL SOUS COUZAN
TRELINS

Example of PDM
diagnostic cartography

**SAINT GEORGES EN
COUZAN (42)**

Example of PDM diagnostic cartography Environmental zoning **SAINT GEORGES EN COUZAN (42)**



PHASE 3 : implementation

- CRPF has PDM initiative

Implemented actions in this frame are:

- establishment of exhibition-sites ;
- organization of training meetings ;
- grouping logging sites ;
- guidance-visits to owners ;
- promotion of forest certification ;
- encouragement to work with approved management operators

⑩ The operator (or the operators) carries out harvestings and silvicultural tendings, management plan, planned equipments.

PHASE 4 : follow-up

The technical comity meets 3 times:

- at start to share objectives;
- at the end of every year of coordination
 - to assess realizations ;
 - to plan the program of the coming year

A turn-around file is exchanged regularly between CRPF and operators to review the progress of work sites suggested by CRPF.

An assessment is carried out by CRPF technicians at the end of the 2 years of coordination, then again at the end of 3rd year to observe the “delayed effects”.

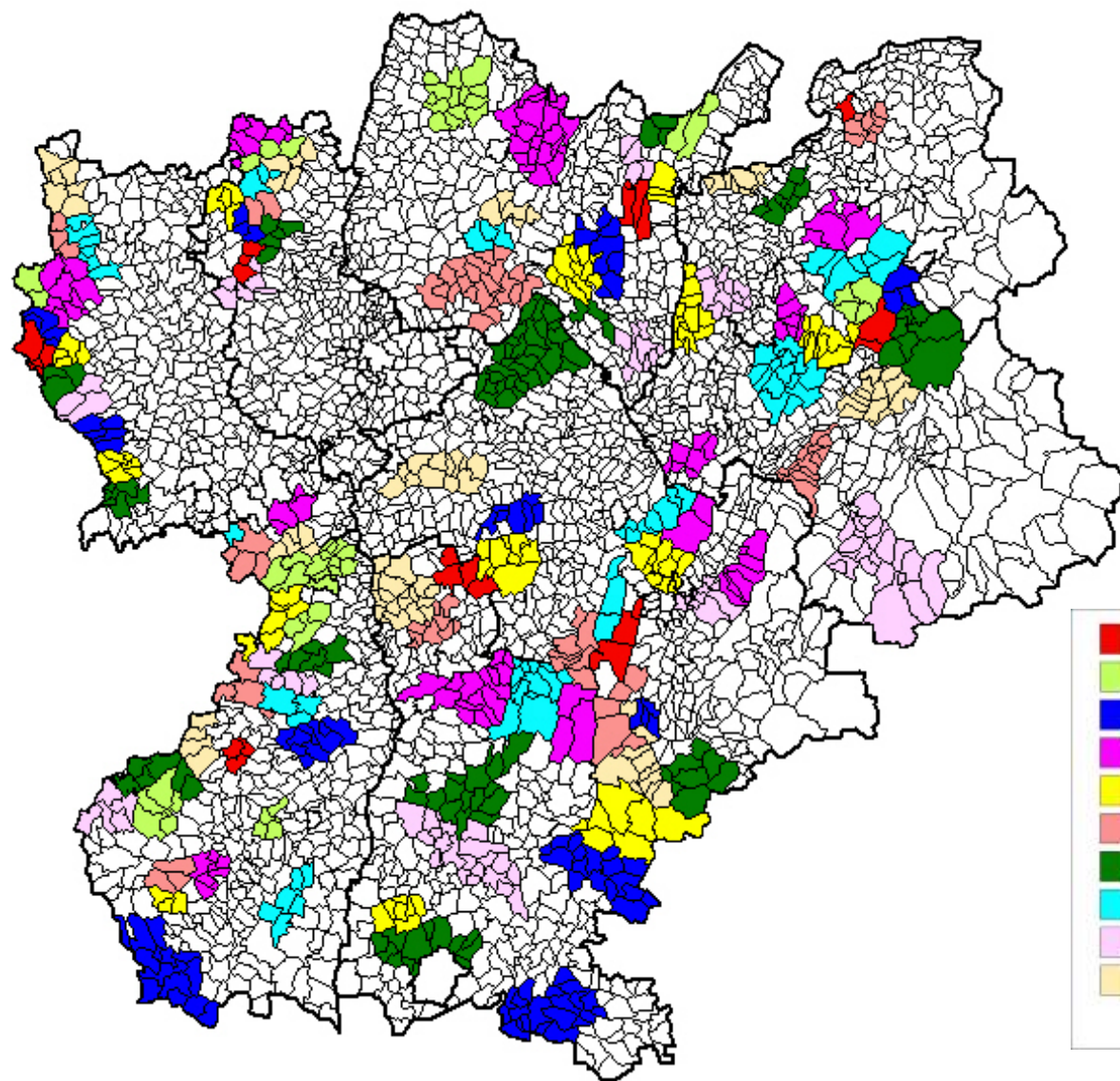
MAIN RESULTS

(on 80 ended plans from 2001 to 2009
private forest area covered: 330,000 ha)

After 2 years coordination (baseline year before start of PDM):

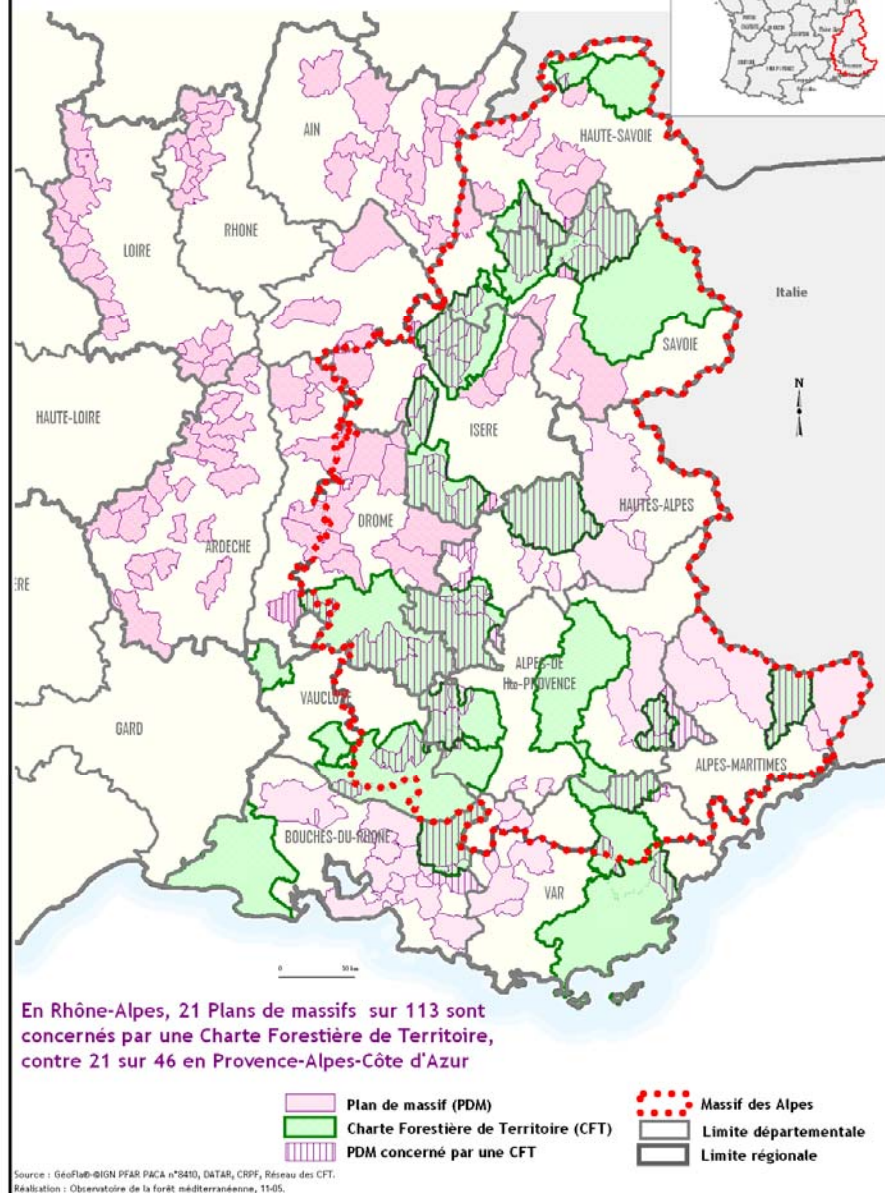
- Area of improved stands: x 1,8
- Harvested volume: x 2
- Forest road network: x 3,2
- Contacted forest owners: x 14
- Area benefiting of a management plan (PSG and CBPS): x 1,4

RHONE-ALPES REGION: accomplished or in progress PDM



FOREST CHARTER OF TERRITORY AND MASSIF PLANS IN RHONE-ALPES AND PACA

Le massif des Alpes Chartes Forestières de Territoire et Plan de Massif



CONCLUSION

The massif Plan has proved to be a great tool of territorial development in private forest.

- PDM completes the tool «territory forest charters»
- In 8 years, **one third of private forest cover** benefits from the PDM operation.